

This worksheet is designed for AQA GCSE psychology.

It should be completed alongside watching the psych boost video on www.psychboost.com or YouTube.

The AQA GCSE Psychology Specification..

Differences between human and animal communication

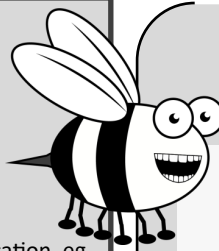
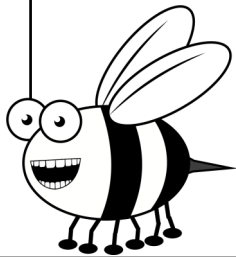
Limited functions of animal communication (survival, reproduction, territory, food).

Von Frisch's bee study.

Properties of human communication not present in animal communication, eg plan ahead and discuss future events.

Describe functions of animal communication

Properties of human communication not present in animal communication....



Limited functions of animal communication

Survival

Reproduction

Territory

Food

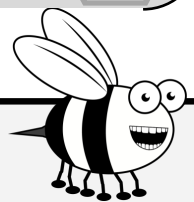
Von Frisch's bee study.

Aim:

Method:

Results:

Conclusions:



Study named in specification

+ POSITIVE EVALUATION

- NEGATIVE EVALUATION

